

„Măgura” Uroiului (Hunedoara County, Romania). An Archaeological Site from the perspective of Landscape Archaeology

*Liviu Măruia**, *Dorel Micle**, *Adrian Cîntar**, *Angelica Bălos***, *Adriana Pescaru****
*Andrei Stavilă*****, *Lavinia Bolcu*****

- * Department of History, West University of Timisoara, Bd. V. Pârvan, No. 2-4, Timișoara, Timiș County, Romania.
** The Board of Culture, Cults and National Cultural Heritage of the Hunedoara County. P-ța Unirii, No. 9, Deva, Hunedoara County, Romania.
*** University of Petrosani, Str. Universității No. 20, Petroșani, Hunedoara County, Romania
**** Department of History, West University of Timisoara, Bd. V. Pârvan, No. 2-4, Timișoara, Timiș County, Romania (student teams)

Abstract: „Măgura” Uroiului (Hunedoara County, Romania). An Archaeological Site from the perspective of Landscape Archaeology. The archaeological site of “Magura Uroiului” (Hunedoara County) is one of the most complex sites in Romania due to its geomorphologic qualities and continuously habitation from prehistory through the Middle Ages. It is a hill with volcanic origin and a series of natural platforms. It was a favorable place both for military fortifications, for civil settlements, and also for quarrying stone. In 2008 a wide-landscape archaeology study was started that includes a detailed digital cartography of the terrain and a 3D reconstruction of the whole archaeological complex and a paleomorphology study. Integrated remote sensing methods (satellite images analysis and geophysical prospects) were used. The first step was a detailed topographical measurement of the site’s surface with the help of a total station (over 100 hectares) in order to reveal all micro-relief details, both natural and man-made. The second step was the editing of GIS spatial data, 2D and 3D graphic reconstructions. The third step was the analysis of the geomorphologic evolution of the terrain, the identification and interpretation of man-made features, the recognition of the ways of human intervention in the environment and of the causes and effects generated in the local ecosystem. The fourth step was a interdisciplinary analysis combining remote sensing and geophysical prospects in order to establish the exact inhabited areas, fortification system, road network, etc. Our study is meant to be a multidisciplinary analysis and aims to establish the relationship between man and environment, the difficult part being the extraordinary complexity of this site and its dimensions.

Key words: GIS, total station, landscape archaeology, field archaeology, cultural heritage

Introduction

From a geographic point of view, the archaeological site at „Măgura” Uroiului (Hunedoara County, Romania) is situated in the Mureș Corridor at the confluence of Strei River with Mureș River, rivers that mark important

access corridors towards the center of Transilvania and Orăștie Mountains (the political and administrative center of the Dacian kingdom in the period between kings Burebista and Decebal, centuries I B.C. to I A.D.).

Its favorable geographic location is even more important because, from this point forward start up numerous roads towards the rich gold ore

area of Apuseni Mountains over the slow slopes of Metaliferi Mountains. The eruptive morphology of the hill on which the site is located, represented by a volcanic massive which dominates the Mures Corridor and the Inferior Strei Valley with over 215 meters relative altitude and the fact that the South, East and West versants are almost vertical, make from Măgura Uroiului an observation point with an exceptional strategic position (fig. 1).

Next to the strategic importance of its location, Măgura Uroiului also had an important economic role, given its eruptive geologic constitution, made up of stone represented by andesites, microlites of feldspar, augite and magnetite, part of these resources have been extracted during the historic ages through quarries and surface extractions.

The archaeological potential of the area became known through surveys and surface research which revealed numerous discoveries from prehistory until modern ages (fig. 2).

History

The oldest mention regarding prehistoric artifacts at „Măgura” Uroiului belongs to G. Téglás (1884, p. 59) at the end of the XIXth century. I. Marțian (1921, p. 21), in a study published in 1921, mentions the existence of a fortification on „Măgura” Uroiului and he attributes it to Dacians.

The *Repertorium* published by M. Roska (1942, p. 127-130) mentions pottery fragments belonging to Wietenberg Culture and the discovery of two Transylvanian bronze Celtic pots on the Uroi Hill. In the monograph of Hunedoara region, O. Floca (1957, p. 111-112) describes the area of „Măgura” Uroiului as being inhabited since prehistory. Also, he discusses the existence of a Roman fortification and of a medieval fortress. In the 70's, some hazardous findings bring up evidences of Roman and Byzantine (I. Andrițoiu, 1979, p. 28) ages.

During an air surveying program in the late 90's that was meant for Middle Mures Valley, Professor W.S. Hanson from Glasgow University and I.A. Oltean took a series of air photos and some of them comprised „Măgura” Uroiului. Analyzing those images, the authors suggested that the site belonged to the first Iron Age (W. S. Hanson, I. A. Oltean, 2000, p. 43-49) and the Latène fortress of

Petris (I. A. Oltean, 2007, p. 29, 39, 151-154, 195 and 221) from *Tabula Peutingeriana*.

In 2001 a new step is made in knowing this site due to a rescue excavation on one of its terraces in the East side of the site. The research revealed that it was inhabited at the beginning of the Iron Age and during the Dacian period. In 2003 systematic research of a larger surface was initiated in order to clarify more elements of habitat and fortification system (A. Ardeu, A. Bălos, 2002, p. 67-81). Thus, more terraces and the fortification situated on the superior plateau were researched (A. Bălos et al., 2004, p. 250-251, A. Pescaru et al., 2005, p. 287-288, A. Pescaru et al., 2006, p. 281-282, A. Pescaru et al., 2007, p. 286-287, A. Pescaru et al., 2009, p. 181-182, S. A. Luca, 2005, p. 162). The following year's excavation revealed that the site was inhabited during even for a longer period and for different historic ages on the terraces at the base of the hill; they were concentrated on different terraces and dating between Eneolithic and Roman time. The superior plateau fortification was built, most probably, in the first Iron Age, its last phase dating in late Latène.

Methodology

In 2008 a team from the West University of Timisoara took topographical surveys of the whole site and identified new anthropogenic elements (fortification systems, staple extraction areas, antique roads and new archaeological sites dating from more historic ages).

Non-invasive archaeological field research done during the summer and winter of 2008 were meant to identify and emphasize archaeological complexes that were visible at the soil's surface with the purpose of creation of an assembly map of the numerous anthropogenic interventions on the site in order to establish the methodology of approach in the future throughout systematic research.

The research methodology implied more steps during 3 weeks while the site was carefully investigated step-by-step, almost exhaustively. The first step dealt with the detailed topographical surveys of the entire objective at „Măgura” Uroiului, with a total station Leica TC 407 and its accessories (tripod, poles and prisms). The first operation regarded the identification of the site and its limits and this was made through a surface

„Măgura” Uroiului (Hunedoara County, Romania). An Archaeological Site from the perspective of Landscape Archaeology

survey. After establishing the limits of the site the total station was installed, using geographical coordinates (lat/long) which were later converted to the Stereo 70 coordinate system (Romanian standard).

From the beginning, being such a large and complex site, the team had to adapt its archaeological topography methodology to the site's realities; it has a surface of 305 hectares and an altitude difference between its extremes of 215 meters. The whole site topographical surveys gathered more than 7500 points and required 52 different base point changes of the total station; all due to the present time site morphology (steep areas, numerous natural terraces, rocks, ravens etc.) and to elements that blocked visibility (thick vegetation, constructions, great altitude differences). The team was made up of four members (one total station operator and three prism handlers). The prism handlers had to be familiarized with differencing anthropogenic elements within the landscape (earth waves, anthropogenic terraces, antique roads, staple extraction areas, site spreading based on soil pigmentation and ceramic fragments dispersion etc.). Also, in the context of the following 3D reconstruction of the site, they had to be aware of the way the characteristic points had to be read in order to mark the specific elements of the natural morphology (terraces, terrace noses, ravines, swampy valleys, abrupt, plateaus, versants etc.). An extremely important element within the field investigation process was the moment and period of work. Thus, there were two distinct periods: summer time – when the superior plateau was analyzed and surveyed and winter time – when the other more complex and numerous sectors of the site were analyzed and surveyed. The difference between the two work moments is substantial because of the numerous thick bushes that cover a large part of the site mostly in the summer and it blocks the visibility and access both for identification of archaeological complexes and for surveys with the total station. This is why winter is the best season for such activity and so, we continued our investigation during December 2008.

Results and Discussions

In the context of the total station topographical surveys, the team also developed a detailed study on landscape archaeology (D. F. Dincauze, 2000, p. 193-201 and 213-226, F. Cambi, N. Terrenato, 2006, p. 87-167, L. Drăguț, 2000, p. 14-15, M. Johnson, 2007, p. 134-161, A. Bejan, D. Micle, 2006, p. 105-116) in order to integrate in the surrounding environment the known and newly discovered archaeological complexes (fig. 3).

Thus, the team delimited the *acropolis* situated on the superior plateau of “Măgura” Uroiului, which was related to the special strategic elements offered by its location: exceptional visibility over Mures Corridor in the sector between Deva and Orăștie; visibility over Strei Corridor from its confluence with Mures River – which occurs exactly on the South side of “Măgura” Uroiului – to Depresiunea Hațegului at Subcetate; visibility over the inferior and middle valley of Grădiște River (also called Apa Orașului at its inferior course) which is the main access towards the Dacian kings' capital – Sarmizegetusa; a very good visibility over summit roads that climb towards Platforma Luncanilor – the easiest route for construction materials (molded blocks of limestone for fortifications or andesite plinths for sanctuaries) to Dacian fortifications and settlements in the Orăștiei Mountains; visibility and control over summit roads that head North towards the gold extraction area Bucium – Zlatna – Săcărâmb – Almașu Mare.

The team also identified carved in stone the shape of the wood poles that probably supported the surveillance tower, on the South side of the *acropolis* above abrupt faces that dominate the confluence of Strei River with Mures River (fig. 4).

Important elements discovered during these research sessions revealed the complete path of the fortification with ditch and earth wave that blocked access from the North side to the site's *acropolis*. The path of the fortification and the relation between it and natural morphology elements were cleverly speculated by their builders, and we could

precisely identify them on site. Also, it turned out, at least in the West extremity that the fortification ends with a stone surveillance tower at the limit of the abrupt (fig. 5).

An increased attention was given to the study of antique roads of access to the *acropolis*; they were identified and marked on the North part of the site. The manner of construction and the exact path can be clearly seen. An interesting element was observed: the fortification at the contact with the access road presents an *en chicane* gate.

The careful analysis of the natural shapes connecting “Măgura” Uroiului to Munții Metaliferi on the North side of the site revealed an important earth wave that blocked it, so the fortification can be classified as barred promontory.

The study of the areas surrounding “Măgura” Uroiului on all four sides, revealed an important number of diverse archaeological objectives dating from more historic ages, many of them unknown until our investigation. What the team managed to precisely mark these sites with the total station, to establish their relation with natural morphologic elements and to integrate them systemically into the context of the complex site at „Măguria” Uroiului. One of the elements emphasized during our research is the identification of a possible route of the Roman road that crosses Mures River Valley and goes around „Măgura” Uroiului through its North side.

Determining the economic importance as a source of staple of this volcanic neck called „Măgura” Uroiului, also represented one of the main objectives of our 2008 non - invasive systematic field research. The sectors where the volcanic rock shows to surface were carefully studied to observe traces of anthropogenic interventions of stone extraction and there were 6 quarries found on the cliff. We tried to establish the extraction technique based on elements still visible. Along the quarries, we surveyed a few dozens of exploitation terraces with roads for access and lithic material transportation and numerous areas where the residual material from andesite extraction was deposited. After transposing the field reality into the detailed topographical plan and using the careful observations on site, the important relevance of the site as extraction centre of andesite was revealed at „Măgura” Uroiului.

From the landscape archaeology point of view, the most complex areas of the site proved to be the South-West and South-East sides, mostly limited by the right shore of Mures River. This sector contains tens of natural terraces, some with significant surfaces of a few hectares, limited by abrupt, exposed hillsides or prominent intermediate peaks. Field systematic research revealed at least four distinct elements of anthropogenic intervention in this sector: elements of habitat; elements of craft (extraction, primary processing and transportation of the stone from the quarries to the superior plateau over the abrupt); military elements (through fortifications represented by earth waves – maybe with stone filling) and sacred or funeral elements.

In the context of marks left on the surface of the terrain, the elements of habitat are proven by the grouping of ceramic artifacts in certain sectors, by soil pigmentation where the anthropogenic intervention appears as intense, by the existence of obvious anthropogenic terraces, distinct of the natural ones, with such morphology and disposition that they were used only as habitat, not with military purposes. These elements were found in different sectors of the site after the survey, thus the contour of the major inhabitation area of „Măgura” Uroiului was drawn and it is completed by the systematic archaeological research that are carried on since 2003. Gathering and processing of data offered by the field and archaeological research gives us, today, the general image of disposition and structure of the habitat elements dating between Prehistory and the Dark Ages (fig. 6).

The architectonic structures with military valances are numerous on the South and South-West side of the site. The most important one is represented by a medieval fortification in good condition, but progressively degraded by superposing modern constructions in the North-East extremity of Uroi village. Also, the detailed studies of archaeological topography tried to determine the architectonic path and logic of the earth waves with stone filling that cross a part of the terraces on the South side of the site. Important sectors of these earth waves were detailed; they blocked access towards some of the natural terraces which were habitat favorable and also towards the fortification. Anthropogenic terraces of leveling were detailed in the same context of fortified components; they were spread on prominent

„Măgura” Uroiului (Hunedoara County, Romania). An Archaeological Site from the perspective of Landscape Archaeology

promontories or on intermediate peaks, with an obvious strategic role. The beginning of systematic archaeological investigations over these areas will clear their exact functionality and age.

Regarding the sacred or funeral structures, these are based exclusively on logic deductions, which are connected to the unique, natural morphology of the volcanic caldera on the central-South side of the site – unfortunately, the caldera is totally filled in its inferior part with millions of tones of domestic waste because this is the “ecologic” dump of localities on Valea Muresului. To sustain the hypothesis of a possible sacred area in the volcanic caldera, the main argument is given by its lower area, improper for habitation or fortifications, and by the initial ambient landscape dominated by the impressive rocky cliff on the North part of the caldera. Also, systematic field research determined the existence of important anthropogenic terraces located on two of the prominent secondary peaks that dominate the caldera, the slope connecting them is fortified by an earth wave with stone filling which is sectioned by the modern road leading to the dump. The hypothesis will probably never be verified due to the huge amount of domestic waste that covers this part of the site (fig. 7, 8 and 9).

Along these anthropogenic complexes succinctly mentioned in this presentation, there were discovered other numerous traces of human intervention dating in different historic ages, all of them being transposed to the topographical plan of the site.

In order to complete the data acquired on site throughout non-invasive systematic research, the team used satellite images offered by Google Earth. These were processed along the orthophotoplans of the site which were geo-referenced and allowed detailed data integration of the topographical survey in the general context of geographic landscape at the confluence of Strei River with Mures River (fig. 10 and 11).

The laboratory processing work is an extremely important step in the economy of the study of landscape archaeology. Data resulted from surveys were converted from the native format of the total station acquisition software into a GIS software accessible format. Each survey represented a separate job. Files with .gsi extension (native format) were exported by the total station communication software - *Leica Geo Office Tools* in a M.S. Excel .csv format and were primarily edited for ArcMap (ArcGIS 9.1). The editing of the file consists in inserting a header row before the data strings with the name of the column: id, x, y, z. The file is ready to be imported for further editing in ArcMap, using Add Data. At this point, a data check was made in order to discover any sort of mismatches with the terrain reality, before the 2D and 3D editing. The check tracked aspects such as: points' coordinates, altitude, topographical map concordance etc. (fig. 12 and 13).

Conclusions

The results of the archaeological field study represents the creation of topographic detailed plans and maps that reveal all morphological, natural and anthropogenic elements which were identified on site. The maps offer a general image of elements in such a complex site, they allow the establishments of relations between archaeological structures and they offer an important starting point in managing systematic research in the future.

As a whole, the systemic approach through the lens of landscape archaeology of the „Măgura” Uroiului site offers a first general image of a true ecosystem which, following further research, will take its place between the important archaeological sites of Romania.

Liviu Măruia, Dorel Micle, Adrian Cîntar, Angelica Bălos, Adriana Pescaru, Andrei Stavilă, Lavinia Bolcu



Fig. 1 - Hunedoara County, Romania



Fig. 2 - Măgura” Uroiului Hill during the topographic surveys

„Măgura” Uroiului (Hunedoara County, Romania). An Archaeological Site from the perspective of Landscape Archaeology

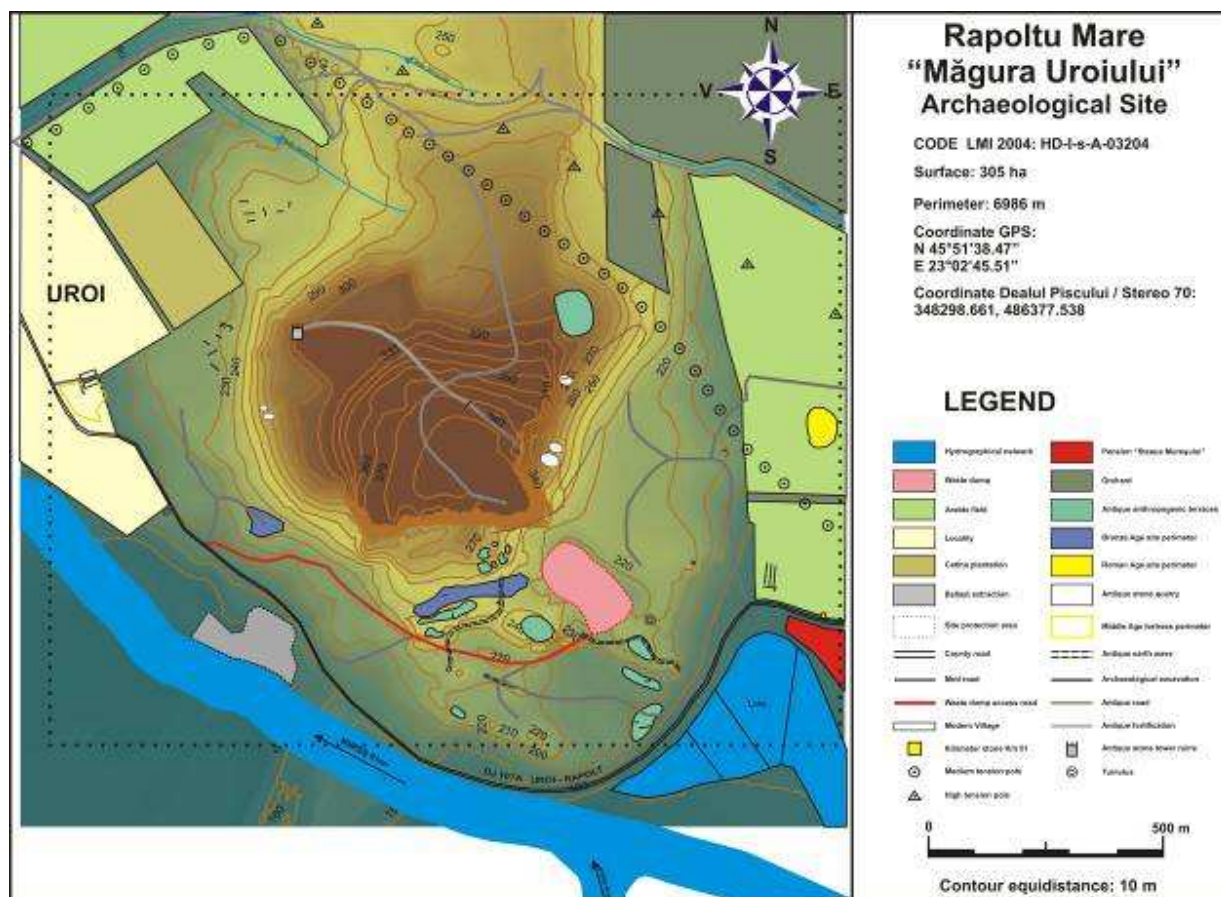


Fig. 3 - „Măgura” Uroiului topographic survey plan

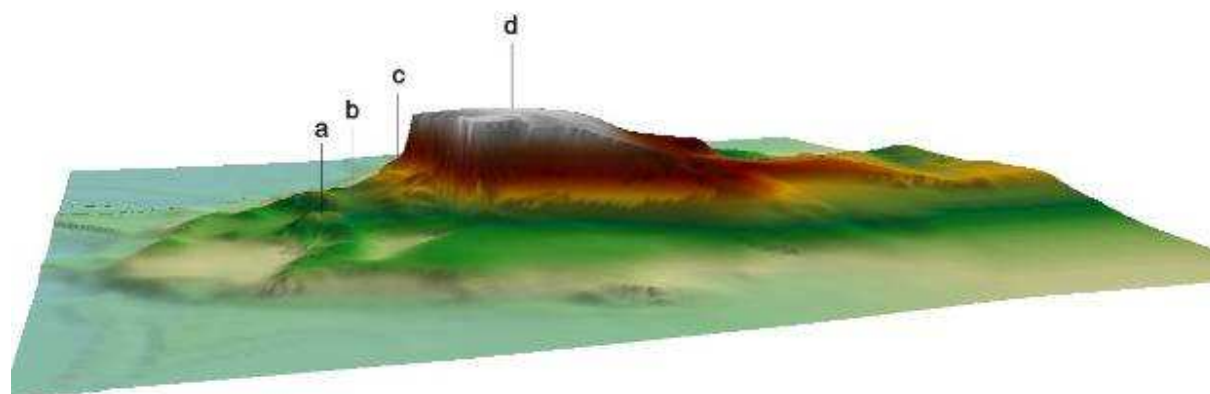


Fig. 4 - Digital terrain model, 3D reconstruction of the SE profile: a and b – anthropogenic terraces; c – andesite extraction terrace; d - *acropolis*

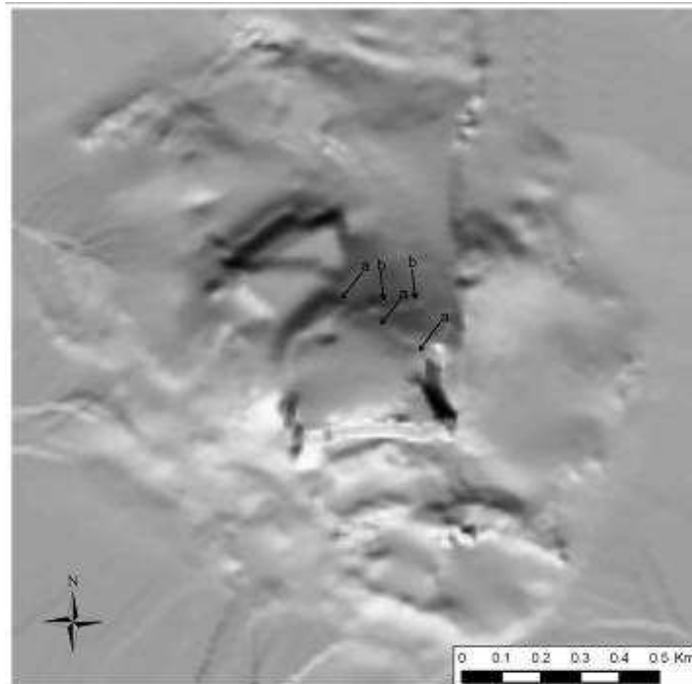


Fig. 5 - The digital terrain model of „Măgura” Uroiului, it reveals the earth wave of the fortification on the *acropolis* (a), and the antique access road (b)

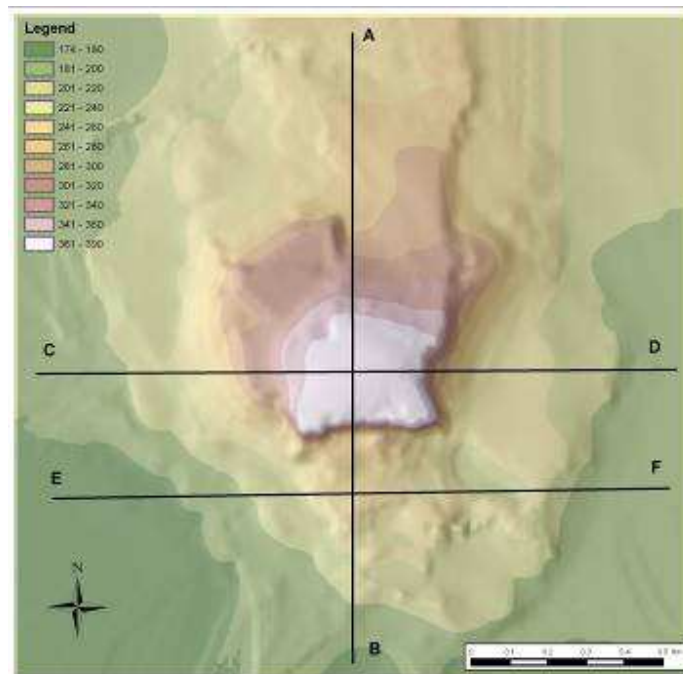


Fig. 6 - Digital terrain model, „Măgura” Uroiului site with altitude values and profile sketch

„Măgura” Uroiului (Hunedoara County, Romania). An Archaeological Site from the perspective of Landscape Archaeology

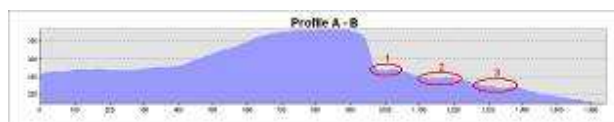


Fig. 7 - Longitudinal profile (A-B) on the N-S axis of Uroi Hill, which reveals: 1 – andesite exploitation antique terrace, 2 and 3 – anthropogenic inhabitation terraces

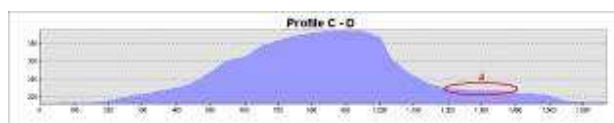


Fig. 8 - Longitudinal profile (C-D) on the W-E axis of Uroi Hill, which reveals: 4 – natural terrace

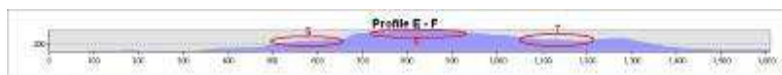


Fig. 9 - Longitudinal profile (E-F) on the W-E axis of Uroi Hill, which reveals: 5- natural terrace, 6 – anthropogenic natural terrace, 7 – geomorphologic caldera (ecologic waste dump today)



Fig. 10 - Satellite image of Uroi Hill, source: *Google Earth* (CNES/Spot Image, 20 July 2003)

*Liviu Măruia, Dorel Micle, Adrian Cîntar, Angelica Bălos, Adriana Pescaru, Andrei Stăvilă,
Lavinia Bolcu*



Fig. 11 - Orthophotogram of Uroi Hill, scale: 1:5000. Source: Romanian National Center of Geodesy, Cartography, Photogrammetry and Remote Sensing, August 2006

„Măgura” Uroiului (Hunedoara County, Romania). An Archaeological Site from the perspective of Landscape Archaeology

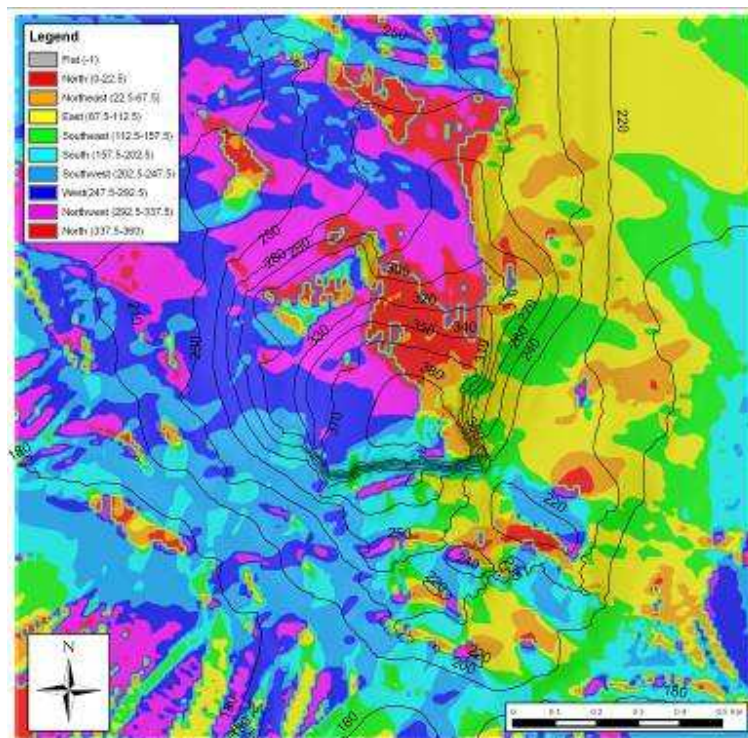
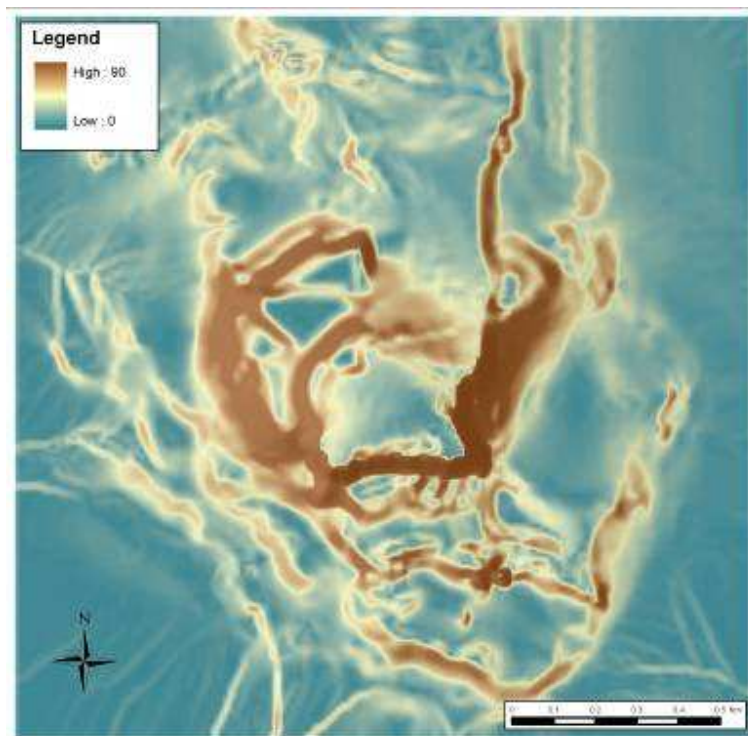


Fig. 12 - Sun exposition plan of Uroi Hill, which reveals the proper inhabitation areas (E and S-E sides), with natural illumination and heating



**Liviu Măruia, Dorel Micle, Adrian Cîntar, Angelica Bălos, Adriana Pescaru, Andrei Stavilă,
Lavinia Bolcu**

Fig. 13 - Slope plan of Uroi Hill, which reveals inhabitation proper terraces

BIBLIOGRAPHY

- Andrițoiu I., 1979, *Contribuții la repertoriul arheologic al județului Hunedoara*, Sargetia, 14, p. 15-34.
- Ardeu A., Bălos A., 2002, *Cercetări arheologice la Măgura Uroiului (Jud. Hunedoara)*, Cvmidava, 25, p. 67-81.
- Bălos A., Ardeu A., Stăncescu R., Mitar C., Andrei Ș., Papp V., Straja P., 2004, *Rapoltu Mare, com. Rapoltu Mare, jud. Hunedoara. Punct: Măgura Uroiului*, Cronica Cercetărilor Arheologice din România. Campania 2003, București, p. 250-251.
- Bejan A., Micle D., 2006, *Arheologia - o știință pluridisciplinară. Metode clasice și moderne de lucru*, Timișoara, Ed. Excelsior.
- Cambi F., Terrenato N., 2006, *Introduzione all'archeologia dei paesaggi*, Roma, Nuova Italia Scientifica.
- Dincauze D. F., 2000, *Environmental archaeology. Principles and practice*, Cambridge, Cambridge University Press.
- Drăguț L., 2000, *Geografia Peisajului*, Cluj, Editura Presa Universitară Clujeană.
- Floca O., 1957 *Ghid turistic al regiunii Hunedoara*, Deva, Tipografia Județeană Deva.
- Hanson W. S., Oltean I. A., 2000, *A Multi-Period Site on Uroi Hill, Hunedoara: An Aerial Perspective*, Acta Musei Napocensis, 37/1, p. 43-50.
- Johnson M., 2007, *Ideas of Landscape*, Carlton, Blackwell Publishing.
- Luca S. A., 2005, *Repertoriul arheologic al județului Hunedoara*, Alba Iulia, Editura Altip.
- Marțian I., 1921, *Urme din războaiele romanilor cu dacii. Studiu Arheologic*, Publicațiile Comisiunii Monumentelor Istorice. Secțiunea pentru Transilvania, Cluj, p. 21-25.
- Oltean I. A., 2007, *Dacia. Landscape, colonization and romanisation*, London, Routledge Press.
- Pescaru A., Bălos A., Ardeu A., Stăncescu R., Andrei Ș., Nicolicea R., Papp V., Straja P., Bărbat A., 2005, *Rapoltu Mare, com. Rapoltu Mare, jud. Hunedoara. Punct: Măgura Uroiului*, Cronica Cercetărilor Arheologice din România. Campania 2004, București, p. 287-288.
- Pescaru A., Bălos A., Ardeu A., Stăncescu R., Barbu I., Doncuțiu C., Țuțuianu C.D., Papp V., 2006, *Rapoltu Mare, com. Rapoltu Mare, jud. Hunedoara. Punct: Măgura Uroiului*, Cronica Cercetărilor Arheologice din România. Campania 2005, București, p. 281-282.
- Pescaru A., Bălos A., Stăncescu R., Pavel R., Papp V., Crandell O., 2007, *Rapoltu Mare, com. Rapoltu Mare, jud. Hunedoara. Punct: Măgura Uroiului*, Cronica Cercetărilor Arheologice din România. Campania 2006, București, p. 286-287.
- Pescaru A., Bălos A., Stăncescu R., Pavel R., Papp V., Crandell O., 2008, *Rapoltu Mare, com. Rapoltu Mare, jud. Hunedoara. Punct: Măgura Uroiului*, Cronica Cercetărilor Arheologice din România. Campania 2007, București, p. 248-250.
- Pescaru A., Bălos A., Stăncescu R., Pavel R., Papp V., Crandell O., 2009, *Rapoltu Mare, com. Rapoltu Mare, jud. Hunedoara. Punct: Măgura Uroiului*, Cronica Cercetărilor Arheologice din România. Campania 2008, București, p. 181-182.
- Roska M., 1942, *Erdely régészeti repertoriuma*, Cluj, p. 127-130.
- Teglás G., 1884, *Adatok hunyadmegye praehistoricus térképéhez*, Hunyadvarmegyei történelmi és régészeti társulat évkönyve, Budapest, 3, p. 59-65.